



# Award Winning **Oracle NetSuite** Partner

**100+** Implementations  
Certified **NetSuite** Consultants  
Proven **Delivery** Record

[www.the-absol.com](http://www.the-absol.com)



# Why **NetSuite**

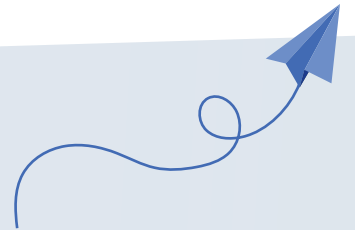


**NetSuite** is the world's #1 Cloud ERP –  
trusted by **44,000+** businesses worldwide

NetSuite helps growth-ready businesses simplify financials, automate compliance, and scale without adding overheads.

- With real-time dashboards, pre-built KPIs with flexible reporting and user-friendly workflows, NetSuite reduces manual work and accelerates role-specific decision-making for improved business efficiency.

## Why **ABSOL**



**100+ NetSuite  
Implementations Delivered**



**60+ Active  
Clients Supported Globally**



**10+ NetSuite  
Certified Consultants**



**Consistently Recognized  
in NetSuite Partner Ecosystem**

## ABSOL **Timeline**



# Our **NetSuite Services**



**Licensing &  
Advisory**



**Implementation &  
Audit**



**Customizations &  
Integrations**



**Support &  
Training**

***From rollouts to managed support – tailored for your growth***

## Our **Edge**



**Solutions-first  
delivery approach**



**Localization enhancements  
(tax & compliance)**



**Mobile extensions  
for field teams and delivery**



**Banks & GSP integrations**

## Locations

**USA**

New Jersey

**Mexico**

Guadalajara

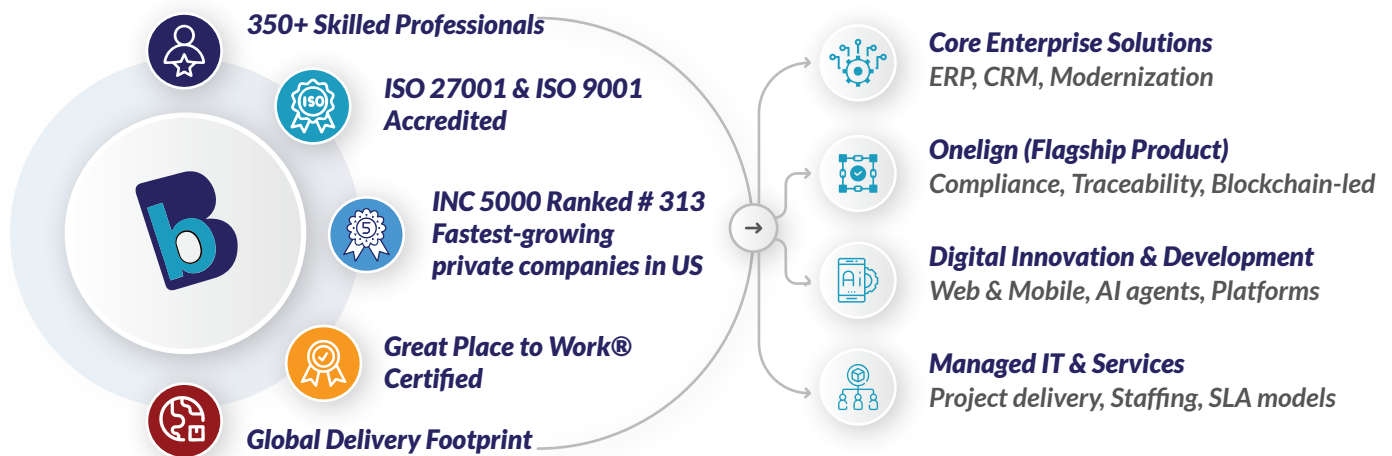
**India**

Chennai, Hyderabad,  
Vijayawada

**ABSOL is a proud part of the BONbLOC Group – a global technology powerhouse across ERP, AI, Blockchain, and IoT.**

BONbLOC is redefining how enterprises create, secure, and scale trust in a digitally connected world.

With modular SaaS platforms and enterprise services, BONbLOC brings agility and automation to complex supply chains, financial systems, and compliance-heavy operations. Trusted by enterprises and governments alike, our approach is rooted in reliability, scalability, and real-world impact.



## Onelign: BONbLOC's Flagship SaaS Platform

Onelign is a modular, blockchain-backed traceability and compliance engine. Built to ensure data truth and security, it captures even the smallest sensitive interactions across pharma, food, trade, and public networks — helping enterprises meet compliance, prevent tampering, and maintain operational integrity.

Industry	Key Use Case
Pharma & Food	Serialization, DSCSA/FSMA, anti-counterfeit
Trade & Finance	Invoice reconciliation, fraud & customs compliance
Smart Cities & Civic	Energy/traffic monitoring, public reporting
Education	Credentialing, record verification
Manufacturing & IoT	Predictive maintenance, edge data processing
Retail & CPG	Inventory traceability, product authentication

# 100+ Happy Clients Worldwide



ABSOL tailored NetSuite to fit our complex diagnostic operations, giving us control, visibility, and a scalable foundation across 60+ centers.

— Dr. Arun Govindarajan, Director of Operations, Aarthi Scans & Labs



ORACLE  
NetSuite

Solution Provider Partner

## Lead Financial Transformation with ABSOL



Trusted Oracle  
NetSuite Partner



100+  
Implementations



Global Delivery  
Network

## Connect with a NetSuite Expert Today

Explore how ABSOL and Oracle NetSuite can accelerate your finance and operations.

Request a personalized demo, connect with our experts.



✉ [marketing@the-absol.com](mailto:marketing@the-absol.com)

☎ +91 44 2821 2503

🌐 [www.the-absol.com](http://www.the-absol.com)